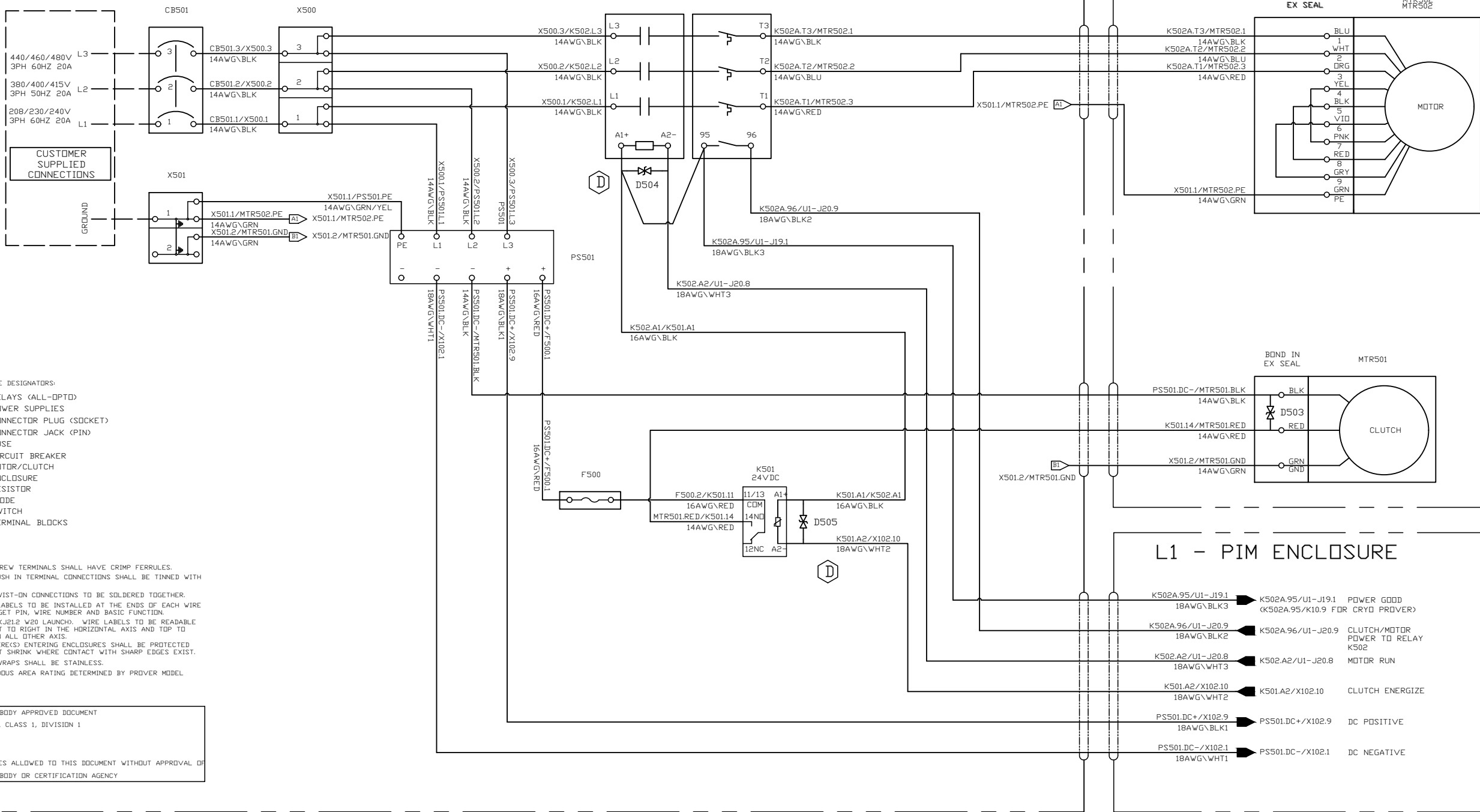


L500 - POWER ENCLOSURE

L501 - PROVER DRIVE



- REFERENCE DESIGNATORS:
- K - RELAYS (ALL-OPTD)
 - PS - POWER SUPPLIES
 - P - CONNECTOR PLUG (SOCKET)
 - J - CONNECTOR JACK (PIN)
 - F - FUSE
 - CB - CIRCUIT BREAKER
 - M - MOTOR/CLUTCH
 - L - ENCLOSURE
 - R - RESISTOR
 - D - DIODE
 - S - SWITCH
 - X - TERMINAL BLOCKS

- NOTES:
- 1) ALL SCREW TERMINALS SHALL HAVE CRIMP FERRULES.
 - 2) ALL PUSH IN TERMINAL CONNECTIONS SHALL BE TINNED WITH SOLDER.
 - 3) ALL TWIST-ON CONNECTIONS TO BE SOLDERED TOGETHER.
 - 4) WIRE LABELS TO BE INSTALLED AT THE ENDS OF EACH WIRE WITH TARGET PIN, WIRE NUMBER AND BASIC FUNCTION.
EXAMPLE: (J212 W20 LAUNCH). WIRE LABELS TO BE READABLE FROM LEFT TO RIGHT IN THE HORIZONTAL AXIS AND TOP TO BOTTOM IN ALL OTHER AXIS.
 - 5) ALL WIRE(S) ENTERING ENCLOSURES SHALL BE PROTECTED WITH HEAT SHRINK WHERE CONTACT WITH SHARP EDGES EXIST.
 - 6) WIRE WRAPS SHALL BE STAINLESS.
 - 7) HAZARDOUS AREA RATING DETERMINED BY PROVER MODEL NUMBER.

NOTIFIED BODY APPROVED DOCUMENT
CSA244391 CLASS 1, DIVISION 1

NO CHANGES ALLOWED TO THIS DOCUMENT WITHOUT APPROVAL OF NOTIFIED BODY OR CERTIFICATION AGENCY

REV	REVISIONS	DATE
E	SUPPLY VOLTAGE AND CURRENT ADDITIONS	02/13/2023
D	MOVED TO AUTOCAD FORMAT ADDED CEMF DIODES TO CONTACTORS AND RELAYS	09/16/2022



FLOW MANAGEMENT DEVICES
 5225 SOUTH 37th ST, STE 4
 PHOENIX, AZ 85040
 PHONE: (602) 233-9885
 FAX: (602) 233-9887
 EMAIL: fmd-sales@idexcorp.com
 WWW.FLOWMDD.COM

NAME	DATE	TITLE:
DRAWN	ROB K	SYSTEM WIRING
REV BY	RICHARD P	POWER 3 PH 208-460VAC
CHECK		G4 C1 D1
REF. NO.	REV E	P/N: 000-111417-DOC
		MODEL #:
		SHEET 1 OF 1
		SIZE B