

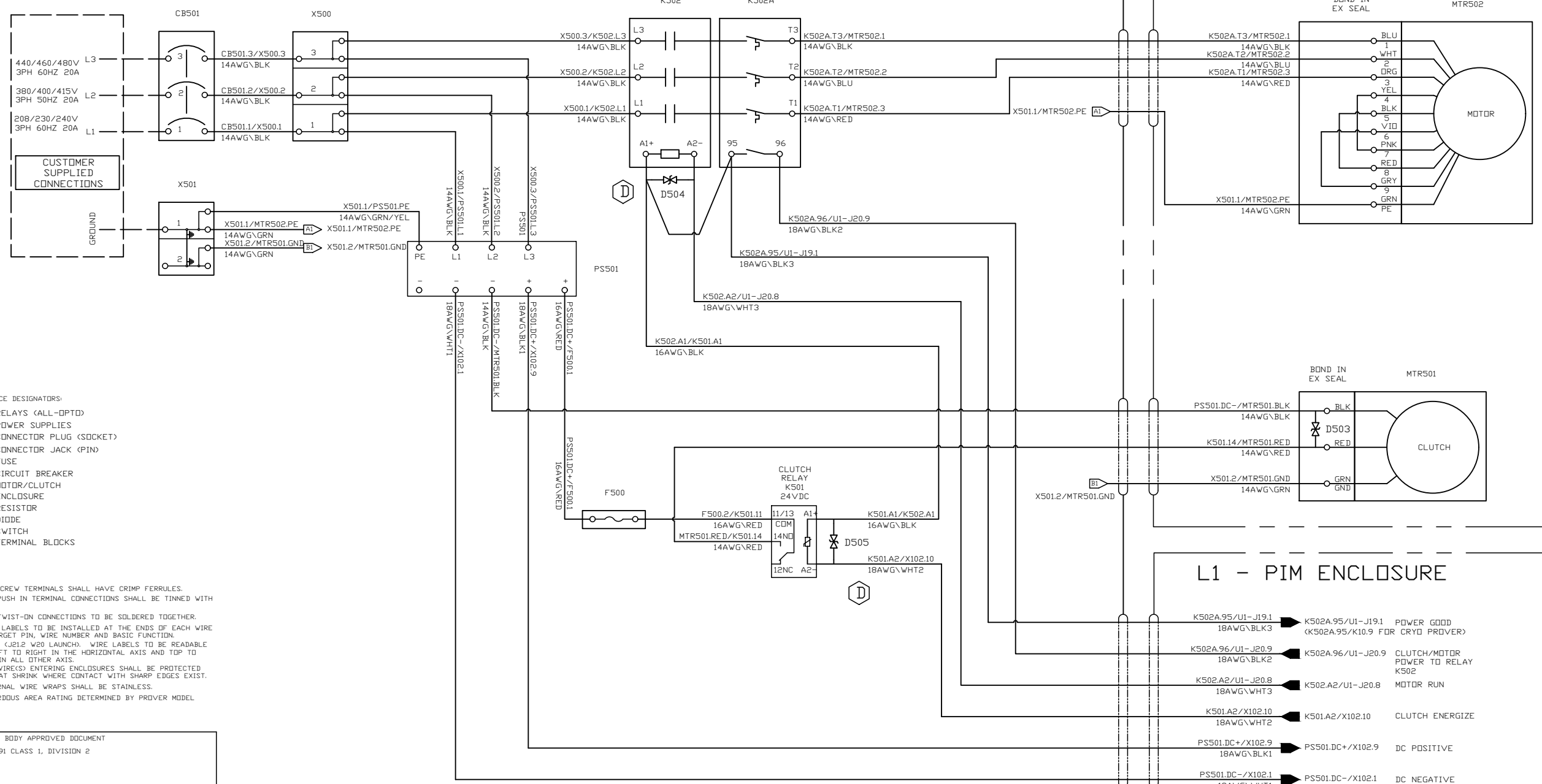
1 2 3 4 5 6 7 8 9 10

A A

L500 - POWER ENCLOSURE

L501 - PROVER DRIVE

F



- REFERENCE DESIGNATORS:
- K - RELAYS (ALL-OPTD)
  - PS - POWER SUPPLIES
  - P - CONNECTOR PLUG (SOCKET)
  - J - CONNECTOR JACK (PIN)
  - F - FUSE
  - CB - CIRCUIT BREAKER
  - M - MOTOR/CLUTCH
  - L - ENCLOSURE
  - R - RESISTOR
  - D - DIODE
  - S - SWITCH
  - X - TERMINAL BLOCKS

- NOTES:
- 1) ALL SCREW TERMINALS SHALL HAVE CRIMP FERRULES.
  - 2) ALL PUSH IN TERMINAL CONNECTIONS SHALL BE TINNED WITH SOLDER.
  - 3) ALL TWIST-ON CONNECTIONS TO BE SOLDERED TOGETHER.
  - 4) WIRE LABELS TO BE INSTALLED AT THE ENDS OF EACH WIRE WITH TARGET PIN, WIRE NUMBER AND BASIC FUNCTION. EXAMPLE: (J21.2 W20 LAUNCH). WIRE LABELS TO BE READABLE FROM LEFT TO RIGHT IN THE HORIZONTAL AXIS AND TOP TO BOTTOM IN ALL OTHER AXIS.
  - 5) ALL WIRE(S) ENTERING ENCLOSURES SHALL BE PROTECTED WITH HEAT SHRINK WHERE CONTACT WITH SHARP EDGES EXIST.
  - 6) EXTERNAL WIRE WRAPS SHALL BE STAINLESS.
  - 7) HAZARDOUS AREA RATING DETERMINED BY PROVER MODEL NUMBER.

NOTIFIED BODY APPROVED DOCUMENT  
CSA244391 CLASS 1, DIVISION 2

NO CHANGES ALLOWED TO THIS DOCUMENT WITHOUT APPROVAL OF NOTIFIED BODY OR CERTIFICATION AGENCY

REV	REVISIONS	DATE
F	SUPPLY VOLTAGE AND CURRENT ADDITIONS	02/13/2023
E	CORRECTED DIVISION RATING	01/18/2023
D	MOVED TO AUTOCAD FORMAT ADDED CEMF DIODES TO CONTACTORS AND RELAYS	09/1/2022



**FLOW MANAGEMENT DEVICES**  
5225 SOUTH 37th ST, STE 4  
PHOENIX, AZ 85040  
PHONE: (602) 233-9885  
FAX: (602) 233-9887  
EMAIL: fmd-sales@idexcorp.com  
WWW.FLOWMDCOM

	NAME	DATE
DRAWN	KAZI H	09/19/2019
REV BY	RICHARD P	02/13/2023
CHECK		
REF. NO.		REV F

TITLE:	
SYSTEM WIRING POWER 3 PH 208-460VAC G4 C1 D2	
P/N: 000-113942-DOC	SHEET 1 OF 1
MODEL #:	SIZE B

1 2 3 4 5 6 7 8 9 10

J J